



# Evolution of RNA viruses in trypanosomatids: new insights from the analysis of *Sauroleishmania*

Donnamae Klocek<sup>1</sup> · Danyil Grybchuk<sup>1,2</sup> · Lucie Tichá<sup>3</sup> · Jan Votýpka<sup>3,4</sup> · Petr Volf<sup>3</sup> · Alexei Yu. Kostygov<sup>1</sup> · Vyacheslav Yurchenko<sup>1</sup>

Received: 22 June 2023 / Accepted: 19 July 2023 / Published online: 25 July 2023  
© The Author(s) 2023

## Abstract

RNA viruses play an important role in *Leishmania* biology and virulence. Their presence was documented in three (out of four) *Leishmania* subgenera. *Sauroleishmania* of reptiles remained the only underinvestigated group. In this work, we analyzed the viral occurrence in *Sauroleishmania* spp. and detected RNA viruses in three out of seven isolates under study. These viruses were of two families—*Narnaviridae* and *Totiviridae*. Phylogenetic inferences demonstrated that totiviruses from *L. adleri* and *L. tarentolae* group together within a larger cluster of LRV2s, while a narnavirus of *L. gymnodactyli* appeared as a phylogenetic relative of narnaviruses of *Blechnomonas* spp. Taken together, our work not only expanded the range of trypanosomatids that can host RNA viruses but also shed new light on the evolution and potential routes of viral transmission in these flagellates.

**Keywords** *Leishmania (Sauroleishmania) adleri* · *L. (S.) gymnodactyli* · *L. (S.) hoogstraali* · *L. (S.) tarentolae* · *Narnaviridae* · LRV2

## Introduction

Leishmaniasis is a neglected parasitic disease threatening millions of people worldwide (WHO 2023). It is caused by flagellated protists of the genus *Leishmania*, which are mainly transmitted to vertebrate hosts by blood-feeding female phlebotomine sand flies (Diptera: Psychodidae)

(Bruschi and Gradoni 2018). The genus comprises four subgenera, from which *Leishmania*, *Viannia*, and *Mundinia* are associated with human diseases, while members of the subgenus *Sauroleishmania* are restricted to reptiles (Espinoza et al. 2018; Kostygov et al. 2021b).

Although *Leishmania* in reptiles was first described over a century ago (Wenyon 1920), information about their life cycle is still limited, likely because they were not considered pathogenic to humans. Nevertheless, several historical and recent reports documented the presence of *Sauroleishmania* spp. in mammals, including dogs and humans (Adler 1962; Coughlan et al. 2017; Latrofa et al. 2021; Mendoza-Roldan et al. 2022b; Pombi et al. 2020).

*Sauroleishmania* has been isolated from a range of reptiles, mostly lizards and geckos of the families Agamidae, Gekkonidae, Lacertidae, Scincidae, and Varanidae (Belova 1971; Wilson and Southgate 1979), and sand flies of the genus *Sergentomyia*, which are considered the main vectors as they preferentially feed on cold-blooded vertebrates (Killick-Kendrick 1990). However, sand flies of the genus *Phlebotomus* are also susceptible to *Sauroleishmania* infection *in vitro* and *in vivo* (Tichá et al. 2021; Tichá et al. 2022).

It is now generally accepted that *Sauroleishmania* has evolved from the mammal-infecting parasites and all its 21

---

Donnamae Klocek and Danyil Grybchuk contributed equally.

---

Handling Editor: Una Ryan

---

✉ Alexei Yu. Kostygov  
kostygov@gmail.com

✉ Vyacheslav Yurchenko  
vyacheslav.yurchenko@osu.cz

<sup>1</sup> Life Science Research Centre, Faculty of Science, University of Ostrava, Ostrava, Czechia

<sup>2</sup> Central European Institute of Technology, Masaryk University, Brno, Czechia

<sup>3</sup> Department of Parasitology, Faculty of Science, Charles University, Prague, Czechia

<sup>4</sup> Institute of Parasitology, Biology Centre, Czech Academy of Sciences, České Budějovice, Czechia

described species form a monophyletic group within the genus *Leishmania* (Akhoundi et al. 2016; Lukeš et al. 2018). The type species, *L. (S.) tarentolae*, has been extensively studied and is commonly used as a laboratory model in many fields, including biotechnology (Breitling et al. 2002; Klatt et al. 2019; Mendoza-Roldan et al. 2022a).

Numerous studies have reported presence of RNA viruses in representatives of the family Trypanosomatidae. To date, five different families of viruses were reported to infect these flagellates, of which *Leishbuviridae*, *Narnaviridae*, and *Totiviridae* are the most frequent (Grybchuk et al. 2018a; Grybchuk et al. 2018c).

Narnaviruses (naked RNA viruses) are capsid-less positive-strand RNA cytoplasmic elements encoding a single RNA-dependent RNA polymerase (RDRP) protein, although a multi-segmented narna-like virus has been described from the trypanosomatid *Leptomonas seymouri* (Kraeva et al. 2015; Lye et al. 2016). *Narnaviridae*, along with RNA bacteriophages (*Leviviridae*), mitochondrial capsidless RNA elements of eukaryotes (*Mitoviridae*), and plant viruses (*Botourmiaviridae*), belong to the phylum *Lenarviricota*. Based on phylogenetic inferences, it has been postulated that capsid-less mito- and narnaviruses diverged upon eukaryogenesis from an RNA phage that infected alphaproteobacteria, the ancestors of mitochondria (Koonin et al. 2015; Sadiq et al. 2022; Wolf et al. 2018). Narnaviruses of Trypanosomatidae are not monophyletic, and their evolution was likely shaped by several horizontal transfers (Grybchuk et al. 2018c).

*Leishmania* RNA virus (LRV) is a double-stranded RNA virus of the family *Totiviridae* infecting trypanosomatids from two genera: *Leishmania* (LRV1/2) (Scheffter et al. 1995; Stuart et al. 1992) and *Blephomonas* (LRV3/4) (Grybchuk et al. 2018c). These viruses form non-enveloped icosahedral virus particles about 40 nm in diameter (Procházková et al. 2021). No cellular receptors have been identified for LRVs. Thus, vertical inheritance is thought to be the predominant mode of viral transmission resulting in general co-evolution of LRVs and *Leishmania* spp. (Cantanhêde et al. 2021; Widmer and Dooley 1995). Notably, occasional horizontal transfers (both intra- and interspecific) have been also reported (Kostygov et al. 2021a). Such transfers are possible owing to the exploitation of host's exosomes as vehicles for transmission between flagellates (Atayde et al. 2019; Lafleur and Olivier 2022; Olivier and Zamboni 2020). Infrequent mating events may also contribute to horizontal transmission of viruses in trypanosomatids (Akopyants et al. 2009; Rougeron et al. 2010; Sádlová et al. 2011).

There is strong evidence that LRVs provide a survival advantage to *Leishmania guyanensis* and *L. aethiopica* in vertebrate hosts through upregulation of pro-inflammatory cytokines facilitating the spread of parasites from the initial infection site (de Carvalho et al. 2019; Ives et al. 2011; Zangger et al. 2014).

The LRV presence also downregulates apoptotic pathways and promotes parasite persistence (Eren et al. 2016). Of note, the molecular mechanisms governing viral maintenance may differ between LRV species (Saura et al. 2022).

In this work, we analyzed the viral occurrence in *Sauroleishmania* spp. and detected RNA viruses in three out of seven analyzed isolates. These viruses belong to two families—*Narnaviridae* and *Totiviridae*. Phylogenetic analyses showed totiviruses from *L. adleri* LV30 and *L. tarentolae* LV108 group together within a larger cluster of LRV2s, while a narnavirus of *L. gymnodactyli* LV247 appeared to be a phylogenetic relative of narnaviruses of *Blephomonas* spp. Taken together, our work expands the range of trypanosomatids that can host RNA viruses to include *Sauroleishmania*, the only *Leishmania* subgenus that has not been scrutinized in this respect so far.

## Materials and methods

### Isolates and cultivation

Seven cultures of *Leishmania (Sauroleishmania)* were examined: *L. (S.) adleri* RLIZ/KE/1954/1433 (LV30) isolated from the common long-tailed lizard *Latastia longicaudata* in Kenya in 1954 (Heisch 1958); *L. (S.) gymnodactyli* RGEC/SU/1964/Ag (LV247) isolated from the agamid lizard *Trapelus (Agama) sanguinolenta* in Turkmenistan in 1964 (Saf'janova 1966); *L. (S.) hoogstraali* RHEM/SD/1963/NG-26 (LV31) isolated from the Mediterranean house gecko *Hemidactylus turcicus* in Sudan in 1963 (McMillan 1965); *L. (S.) tarentolae* RTAR/IT/1981/ISS21-G6c (ISS21) isolated from the common wall gecko *Tarentola mauritanica* in Italy in 1981 (Pozio et al. 1986); *L. (S.) tarentolae* RCYR/IT/1981/ISS24-CK3 (ISS24) isolated from the Kotschy's gecko *Mediodactylus (Cyrtodactylus) kotschy* in Italy in 1981 (Pozio et al. 1983); *L. (S.) tarentolae* IMIN/IT/2017/ISS3200RM-5 (ISS3200) isolated from the sand fly *Sergentomyia minuta* in Italy in 2017 (Di Muccio et al. 2015); and *L. (S.) tarentolae* RTAR/SE/67/G10 (LV108) isolated from the white-spotted wall gecko *Tarentola annularis* in Senegal in 1967 (Ranque 1973). This is one of the most comprehensive collections of the currently available *Sauroleishmania* isolates. Cells were cultivated as described previously (Tichá et al. 2022) and their identities were confirmed as in (Yurchenko et al. 2006).

### Screening for dsRNA and next-generation sequencing

Trypanosomatid cultures were screened as described previously (Grybchuk et al. 2020). In short, 50 µg of total RNA from each strain was digested with DNase I (Thermo Fisher

Scientific, Carlsbad, USA) and S1 nuclease (Sigma-Aldrich, St. Louis, USA) and analyzed by gel electrophoresis. The three gel-positive samples were sequenced at Macrogen (Seoul, South Korea) following the protocol established before (Kleschenko et al. 2019).

### Sequence data processing and phylogenetic inferences

The raw sequence reads were trimmed with Trimmomatic v. 0.40 (Bolger et al. 2014), assembled *de novo* in Trinity v. 2.13.2 (Haas et al. 2013), and mapped back to the obtained contigs using Bowtie2 v. 2.4.4 (Langmead and Salzberg 2012) and SAMtools v. 1.17 (Danecek et al. 2021). BEDTools v. 2.30.0 software was used to estimate read coverage (Quinlan 2014). The identity of each contig was determined by running BLASTN (BLAST+ v. 2.13.0 (Camacho et al. 2009)) against a custom database of publicly available trypanosomatid genomes and BLASTX (DIAMOND v. 2.0.2 (Buchfink et al. 2021)) against UniClust50 protein database (Mirdita et al. 2017). All viral contigs were found by BLASTX. In addition, unmatched contigs were checked for the presence of long ORFs (as it usually the case for viral genomes); however, none was found.

The LRV phylogeny was inferred from concatenated protein sequence alignment of capsid and RDRP genes. The dataset was taken from previous work (Kostygov et al. 2021a). Each gene was aligned iteratively in MAFFT v. 7.490 (Kato and Standley 2013) with G-INS-i algorithm and trimmed with a range of gap thresholds in TrimAl v. 1.4 (Capella-Gutiérrez et al. 2009). The optimal alignment length (665 positions at 0.7 gap threshold for capsid and 828 positions at 0.6 gap threshold for RDRP) and substitution model (LG + I + F + G4 for both capsid and RDRP) were selected based on the average bootstrap support value (ultra-fast bootstraps in IQ-TREE 2 v. 2.2.2.6 (Minh et al. 2020)). The respective alignments were concatenated and subject to maximum likelihood (ML) phylogenetic inference with 1,000 thorough bootstrap replicas in IQ-TREE 2 without partitioning. Bayesian tree was inferred in MrBayes v. 3.2.7. (Ronquist et al. 2012) with default settings and the same model as in the ML analysis. The tree was rooted at the midpoint.

The relationships of LRV2 viruses were inferred based on nucleotide sequences obtained here and all those available in the GenBank. The alignment was performed in MAFFT as above, but no trimming was applied. The ML analysis in IQ-TREE followed the same strategy, but the best automatically selected model was TIM2 + F + I + G4 and the branch support was estimated using 1,000 thorough bootstrap replicas as above.

The narnavirus phylogeny was inferred from the protein sequence of the RDRP gene. The dataset contained

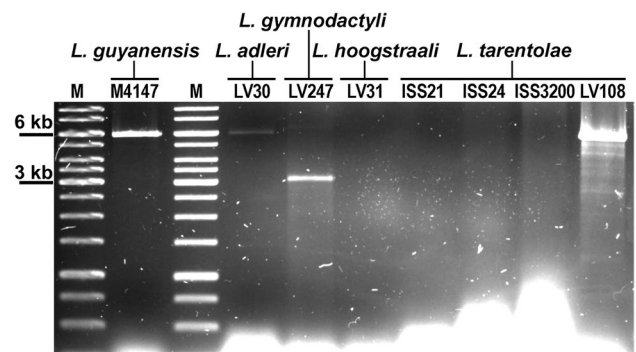
representatives of three families of *Lenarviricota*: *Mitoviridae*, *Narnaviridae*, and *Botourmiaviridae*. The alignment and trimming were done as above resulting in 496 positions long alignment obtained at 0.8 gap threshold and the best-fit model LG + I + F + G4. The ML and Bayesian phylogenies were inferred as above. The tree was rooted with *Mitoviridae* as an outgroup based on previous studies (Sadiq et al. 2022; Wolf et al. 2018).

## Results

### Three more species of *Leishmania* revealed to host RNA viruses

The gel analysis revealed that three out of seven isolates were positive for dsRNA (Fig. 1). *Leishmania* (*S.*) *adleri* LV30 displayed a single dsRNA band with similar mobility of approximately 6 kb, but at least by one order of magnitude lower intensity, as compared to that of the LRV1-4 from *L. (V.) guyanensis* M4147 that was used here as a positive control (Zakharova et al. 2022). On the contrary, a single dsRNA band of nearly the same size detected in *L. (S.) tarentolae* LV108 was severalfold brighter than that in the control. BLAST searches identified LRV2 in these two isolates of *Sauroleishmania*.

*Leishmania* (*S.*) *gymnodactyli* LV247 had a prominent major band of approximately 3 kb along with a fainter band that migrated at about 6 kb. The global BLASTX (all contigs versus clustered UniProt DB) detected only a narnavirus, which corresponded to the lower bright band, while the identity of the faint upper band could not be reliably established. One assembled contig of about 5.4 kb had no detectable ORFs and, as such, returned no BLASTX or BLASTN hits. Other contigs ranging between 5.5 and 7 kb had hits to the *Leishmania* genome. No dsRNA bands were documented in *L. (S.) hoogstraali* LV31 or three *L. (S.) tarentolae* isolates (ISS21, ISS24, and ISS3200).



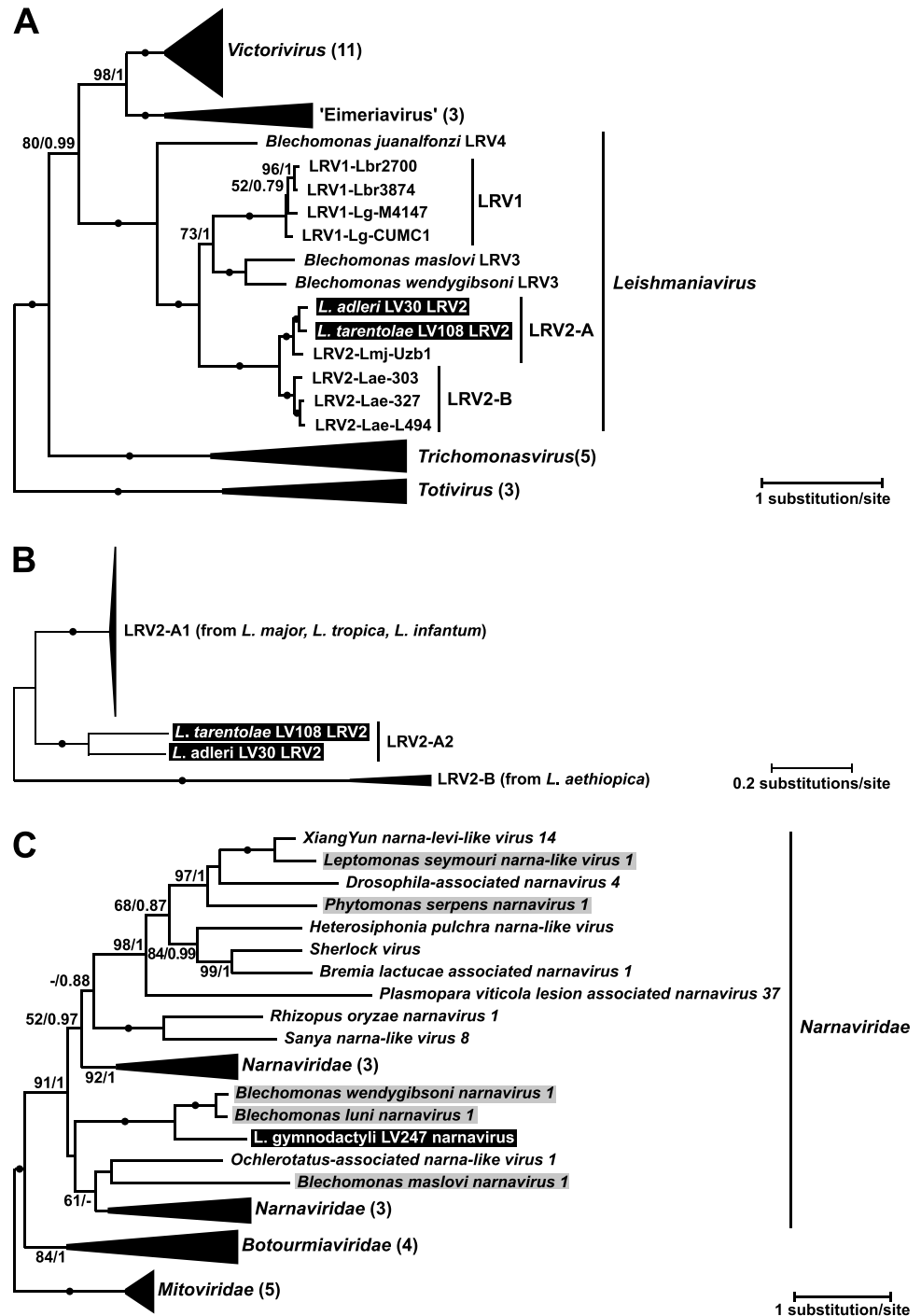
**Fig. 1** dsRNA agarose gel with screened *Sauroleishmania* isolates. *L. guyanensis* Lg-M4147 was used as a positive control. M - 1 kb DNA ladder

## Phylogenetic position of the viruses from *Sauroleishmania*

The phylogenetic analyses unambiguously (as judged by absolute statistical supports) demonstrated that the viruses from *L. (S.) adleri* and *L. (S.) tarentolae* LV108 belong to the LRV2, specifically to the clade associated with *L. (L.) major*. We denoted this clade as LRV2-A, as opposed to LRV2-B, containing viral sequences from *L. (L.) aethiopica*

(Fig. 2A). To understand the relationships of the new viruses with their relatives from the LRV2-A clade, we performed an additional phylogenetic analysis using all nucleotide RDRP sequences of LRV2 available in the GenBank (Figs. 2B and S1). Although most of these sequences were rather short (ranging between 263 and 520 nt) preventing detailed resolution of their relationships (Fig. S1), it became obvious that the LRV2-A clade has a well-supported deep split between the viruses from *L. (Sauroleishmania)* [LRV2-A2]

**Fig. 2** Phylogenetic position of viruses from *Sauroleishmania*. **A** Midpoint-rooted maximum likelihood tree based on concatenated capsid and RDRP amino acid sequences of selected *Totiviridae*. **B** Maximum likelihood tree of LRV2 based on nucleotide sequences of RDRP rooted with LRVs from *L. aethiopica*. **C** Maximum likelihood tree based on RDRP amino acid sequences of selected *Narnaviridae* and rooted with *Mitoviridae*. **A–B** Clades were collapsed for better visibility with a number of samples indicated in brackets. Viruses reported in this study are highlighted in black, narnaviruses previously found in other trypanosomatids are highlighted in gray. Numbers at branches represent bootstrap supports and Bayesian posterior probabilities; circles indicate absolute support (100/1); values below 50% or 0.5 are replaced with dashes or not shown



and those from *L. (Leishmania)* [LRV2-A1]. The latter subclade mostly contains viral sequences from *L. (L.) major* and only a few (nine sequences of 4 distinct haplotypes from *L. (L.) tropica* and one from *L. (L.) infantum*). We could not document host species-specific phylogroups in the LRV2-A1 clade.

The virus from *L. (S.) gymnodactyli* nested within the speciose family *Narnaviridae* with the closest relatives being the two sister viruses from trypanosomatids of the genus *Blechnomonas*, namely, *Blechnomonas wendygibsoni narnavirus 1* and *Blechnomonas luni narnavirus 1* (Grybchuk et al. 2018c) (Fig. 2C). Interestingly, while statistical supports varied across the tree, the two internal branches determining such relationships between these three species showed maximal values for bootstrap percentage and posterior probability.

## Discussion

Our screening of *Sauroleishmania* isolates revealed viruses in three species. Out of these, the first two, namely, *L. adleri* and *L. tarentolae*, harbored the same viral species, which has been characterized earlier—*Leishmania RNA virus 2* (LRV2), while a new virus has been discovered in *L. gymnodactyli*. Although being new, it belongs to *Narnaviridae*, a group, the members of which has been repeatedly recorded in various trypanosomatids (Grybchuk et al. 2018a; Grybchuk et al. 2018c; Lye et al. 2016). Interestingly, only one *L. tarentolae* isolate (that from Senegal) harbored LRV2, while those three obtained in two different regions of Italy from three distinct animal species (one sand fly and two lizards) tested negative. This suggests that the distribution of viruses may be region-specific. However, it cannot be excluded that such a result is biased because of the small sample size.

Our findings shed a new light on evolution of viruses in trypanosomatids, which represents a quaint mixture of co-evolution and horizontal transfers. It was previously known that LRV2 is subdivided into two clades designated here as LRV2-A and LRV2-B for viruses from (mainly) *L. major* and *L. aethiopica*, respectively (Kostygov et al. 2021a). The divergence of these two groups is so ancient that the viruses belonging to them already acquired structural differences in their genome (Grybchuk et al. 2018b). In the current work, we revealed that the LRVs of *Sauroleishmania* fall into the LRV2-A clade, and this result can be explained by occasional co-infections of a common sand fly vector by parasites from these two subgenera (das Chagas et al. 2022; Latrofa et al. 2021; Mendoza-Roldan et al. 2022b; Pombi et al. 2020; Saf'janova 1991; Saf'janova et al. 1976). However, the additional phylogenetic analysis with all available LRV2 sequences suggests that such a viral transfer is not recent

as judged by a relatively deep split between the LRV2-A1 of *L. (Leishmania)* and LRV2-A2 of *L. (Sauroleishmania)*. Considering the limited number of analyzed isolates, we cannot judge whether this transition was unique. However, we argue that establishment of the infection in a phylogenetically distant and, therefore, physiologically different host is challenging and such events should be rare. Conversely, all documented transitions of LRV2-A1s from *L. major* to phylogenetically closer *L. tropica* and *L. infantum* appear quite recent (Hajjaran et al. 2016; Nalçacı et al. 2019; Saberi et al. 2020; Yurchenko et al. 2023) and occurred independently in different lineages of this viral clade, as we demonstrated here for the first time by combining all the available sequences of these viruses.

The new narnavirus discovered in *L. gymnodactyli* provides another example of an interesting link between *Leishmania* and *Blechnomonas*. The sister relationship of this virus to those from *B. wendygibsoni* and *B. luni* is reminiscent of the situation with leishmania viruses: LRVs from these two trypanosomatid genera represent a monophyletic group, but it comprises more lineages (Grybchuk et al. 2018c). Previously, we hypothesized that all narnaviruses in *Blechnomonas* spp. could be acquired independently from other trypanosomatids. However, the phylogenetic position of the virus from *L. gymnodactyli* suggests that, at least in this case, the initial acquisition was followed by a horizontal transfer to another trypanosomatid. As it was argued in our previous study, the direction of this transfer was from *Leishmania* to *Blechnomonas*, since a contact between trypanosomatids of these two genera could occur only in the gut of a flea, the host of *Blechnomonas* spp. (Grybchuk et al. 2018c). Out of the two variants possible for LRVs, i.e., transfer in the gut of either adult fleas or larvae, the second one appears more plausible. Indeed, the presence of *Sauroleishmania* (reptilian parasites) in the gut of adult fleas, which feed on mammalian blood, is unlikely. However, the larvae developing in the dens of mammals are scavengers that can consume bodies of dead insects, including sand flies, frequently appearing in such biotopes. Interestingly, this intergeneric transfer of viruses became possible because of the ability of some sand flies (e.g., *Sergentomyia* spp.) to feed on both reptiles and mammals (Polanská et al. 2020; Tichá et al. 2023). The repeated events of viral transition between *Blechnomonas* and *Leishmania* (one for narnaviruses and at least two for leishmania viruses) suggest that these might also involve *Leishbuviridae* (LBVs), which have been documented in the flea-infecting *Blechnomonas*. To date, only a single representative of this viral family (*Leishmania martiniquensis* LBV1) was found in *Leishmania* (Grybchuk et al. 2020).

In conclusion, detection of RNA viruses in *Sauroleishmania* not only closed the gap in our knowledge about viral presence in different groups of *Leishmania* but also shed

light on the viral evolution in trypanosomatids. At the same time, our study raises new questions requiring screening of more samples and functional studies to reveal the significance of these viruses in *Sauroleishmania* biology.

**Supplementary Information** The online version contains supplementary material available at <https://doi.org/10.1007/s00436-023-07928-x>.

**Author contribution** The study was designed by V.Y. Data collection and analyses were carried out by D.K., D.G., L.T., J.V., P.V., and A.Y.K. V.Y. and A.Y.K. drafted the manuscript. All authors contributed to the final draft and editing, giving their approval for publication and agreeing to be held accountable for the work performed herein.

**Funding** Open access publishing supported by the National Technical Library in Prague. This work was supported by the Grant Agency of Czech Republic (20-22689) to V.Y. Computational resources were partially funded by the European Regional Funds (CZ.02.1.01/16\_019/0000759) to V.Y. and P.V.; L.T. and P.V. were supported by the project LX22NPO5103, Next Generation EU of the National Institute of Virology and Bacteriology.

**Data availability** All sequence data obtained in this work were submitted to GenBank with the following accession numbers: OR192165 (narnavirus of *L. gymnodactyli* LV247), OR192166 (LRV2 of *L. adleri* LV30), and OR192167 (LRV2 of *L. tarentolae* LV108).

## Declarations

**Ethical approval** Not applicable.

**Consent to participate** Not applicable.

**Consent for publication** Not applicable.

**Competing interests** V.Y. is an Editor for Parasitology Research. Other authors declare no competing interests.

**Open Access** This article is licensed under a Creative Commons Attribution 4.0 International License, which permits use, sharing, adaptation, distribution and reproduction in any medium or format, as long as you give appropriate credit to the original author(s) and the source, provide a link to the Creative Commons licence, and indicate if changes were made. The images or other third party material in this article are included in the article's Creative Commons licence, unless indicated otherwise in a credit line to the material. If material is not included in the article's Creative Commons licence and your intended use is not permitted by statutory regulation or exceeds the permitted use, you will need to obtain permission directly from the copyright holder. To view a copy of this licence, visit <http://creativecommons.org/licenses/by/4.0/>.

## References

- Adler S (1962) The behaviour of a lizard *Leishmania* in hamsters and baby mice. *Rev Inst Med Trop Sao Paulo* 4:61–64
- Akhoundi M et al (2016) A historical overview of the classification, evolution, and dispersion of *Leishmania* parasites and sandflies. *PLoS Negl Trop Dis* 10(3):e0004349
- Akopyants NS et al (2009) Demonstration of genetic exchange during cyclical development of *Leishmania* in the sand fly vector. *Science* 324(5924):265–268
- Atayde VD et al (2019) Exploitation of the *Leishmania* exosomal pathway by *Leishmania RNA virus 1*. *Nat Microbiol* 4:714–723
- Belova EM (1971) Reptiles and their importance in the epidemiology of leishmaniasis. *Bull World Health Organ* 44(4):553–560
- Bolger AM, Lohse M, Usadel B (2014) Trimmomatic: a flexible trimmer for Illumina sequence data. *Bioinformatics* 30(15):2114–2120
- Breitling R et al (2002) Non-pathogenic trypanosomatid protozoa as a platform for protein research and production. *Protein Expr Purif* 25(2):209–218
- Bruschi F, Gradoni L (2018) The leishmaniases: old neglected tropical diseases. Springer, Cham, Switzerland
- Buchfink B, Reuter K, Drost HG (2021) Sensitive protein alignments at tree-of-life scale using DIAMOND. *Nat Methods* 18(4):366–368
- Camacho C et al (2009) BLAST+: architecture and applications. *BMC Bioinformatics* 10:421
- Cantanhêde LM et al (2021) The maze pathway of coevolution: a critical review over the *Leishmania* and its endosymbiotic history. *Genes* 12(5):657
- Capella-Gutiérrez S, Silla-Martinez JM, Gabaldon T (2009) trimAl: a tool for automated alignment trimming in large-scale phylogenetic analyses. *Bioinformatics* 25(15):1972–1973
- Coughlan S, Mulhair P, Sanders M, Schönián G, Cotton JA, Downing T (2017) The genome of *Leishmania adleri* from a mammalian host highlights chromosome fission in *Sauroleishmania*. *Sci Rep* 7:43747
- Danecek P et al (2021) Twelve years of SAMtools and BCFtools. *Gigascience* 10(2):1–4
- das Chagas BD et al (2022) Interspecies and intrastrain interplay among *Leishmania* spp. parasites. *Microorganisms* 10(10):1883
- de Carvalho RVH et al (2019) *Leishmania RNA virus* exacerbates leishmaniasis by subverting innate immunity via TLR3-mediated NLRP3 inflammasome inhibition. *Nat Commun* 10(1):5273
- Di Muccio T et al (2015) Epidemiology of imported leishmaniasis in Italy: implications for a European endemic country. *PLoS One* 10(6):e0129418
- Eren RO et al (2016) Mammalian innate immune response to a *Leishmania*-resident RNA virus increases macrophage survival to promote parasite persistence. *Cell Host Microbe* 20(3):318–328
- Espinosa OA, Serrano MG, Camargo EP, Teixeira MMG, Shaw JJ (2018) An appraisal of the taxonomy and nomenclature of trypanosomatids presently classified as *Leishmania* and *Endotrypanum*. *Parasitology* 145(4):430–442
- Grybchuk D et al (2018a) Viral discovery and diversity in trypanosomatid protozoa with a focus on relatives of the human parasite *Leishmania*. *Proc Natl Acad Sci USA* 115(3):E506–E515
- Grybchuk D, Kostygov AY, Macedo DH, d'Avila-Levy CM, Yurchenko V (2018b) RNA viruses in trypanosomatid parasites: a historical overview. *Mem Inst Oswaldo Cruz* 113(4):e170487
- Grybchuk D, Kostygov AY, Macedo DH, Votýpka J, Lukeš J, Yurchenko V (2018c) RNA viruses in *Blechnomonas* (Trypanosomatidae) and evolution of *Leishmaniavirus*. *mBio* 9(5):e01932–e01918
- Grybchuk D et al (2020) The first non-LRV RNA virus in *Leishmania*. *Viruses* 12(2):168
- Haas BJ et al (2013) *De novo* transcript sequence reconstruction from RNA-seq using the Trinity platform for reference generation and analysis. *Nat Protoc* 8(8):1494–1512
- Hajjarian H et al (2016) Detection and molecular identification of *Leishmania RNA virus* (LRV) in Iranian *Leishmania* species. *Arch Virol* 161(12):3385–3390
- Heisch RB (1958) On *Leishmania adleri* sp. nov. from lacertid lizards (*Latastia* sp.) in Kenya. *Ann Trop Med Parasitol* 52(1):68–71
- Ives A et al (2011) *Leishmania* RNA virus controls the severity of mucocutaneous leishmaniasis. *Science* 331(6018):775–778
- Katoh K, Standley DM (2013) MAFFT multiple sequence alignment software version 7: improvements in performance and usability. *Mol Biol Evol* 30(4):772–780

- Killick-Kendrick R (1990) Phlebotomine vectors of the leishmaniasis: a review. *Med Vet Entomol* 4(1):1–24
- Klatt S, Simpson L, Maslov DA, Konthur Z (2019) *Leishmania tarentolae*: taxonomic classification and its application as a promising biotechnological expression host. *PLoS Negl Trop Dis* 13(7):e0007424
- Kleschenko Y et al (2019) Molecular characterization of *Leishmania RNA virus 2* in *Leishmania major* from Uzbekistan. *Genes* 10:e830
- Koonin EV, Dolja VV, Krupovic M (2015) Origins and evolution of viruses of eukaryotes: the ultimate modularity. *Virology* 479–480:2–25
- Kostygov AY et al (2021a) Analyses of *Leishmania*-LRV co-phylogenetic patterns and evolutionary variability of viral proteins. *Viruses* 13:2305
- Kostygov AY et al (2021b) Euglenozoa: taxonomy, diversity and ecology, symbioses and viruses. *Open Biol* 11:200407
- Kraeva N et al (2015) *Leptomonas seymouri*: adaptations to the dixenous life cycle analyzed by genome sequencing, transcriptome profiling and co-infection with *Leishmania donovani*. *PLoS Pathog* 11(8):e1005127
- Lafleur A, Olivier M (2022) Viral endosymbiotic infection of protozoan parasites: how it influences the development of cutaneous leishmaniasis. *PLoS Pathog* 18(11):e1010910
- Langmead B, Salzberg SL (2012) Fast gapped-read alignment with Bowtie 2. *Nat Methods* 9(4):357–359
- Latrofa MS, Mendoza-Roldan JA, Manoj R, Dantas-Torres F, Otranto D (2021) A duplex real-time PCR assay for the detection and differentiation of *Leishmania infantum* and *Leishmania tarentolae* in vectors and potential reservoir hosts. *Entomol Gen* 41(5):543–551
- Lukeš J, Butenko A, Hashimi H, Maslov DA, Votýpka J, Yurchenko V (2018) Trypanosomatids are much more than just trypanosomes: clues from the expanded family tree. *Trends Parasitol* 34(6):466–480
- Lye LF, Akopyants NS, Dobson DE, Beverley SM (2016) A *Narnavirus*-like element from the trypanosomatid protozoan parasite *Leptomonas seymouri*. *Genome Announc* 4(4):e00713–e00716
- McMillan B (1965) Leishmaniasis in the Sudan Republic. 22. *Leishmania hoogstraali* sp. n. in the gecko. *J Parasitol* 51(3):336–339
- Mendoza-Roldan JA et al (2022a) *Leishmania tarentolae*: a new frontier in the epidemiology and control of the leishmaniasis. *Transbound Emerg Dis* 69(5):e1326–e1337
- Mendoza-Roldan JA et al (2022b) *Leishmania (Sauroleishmania) tarentolae* isolation and sympatric occurrence with *Leishmania (Leishmania) infantum* in geckoes, dogs and sand flies. *PLoS Negl Trop Dis* 16(8):e0010650
- Minh BQ et al (2020) IQ-TREE 2: new models and efficient methods for phylogenetic inference in the genomic era. *Mol Biol Evol* 37(5):1530–1534
- Mirdita M, von den Driesch L, Galiez C, Martin MJ, Söding J, Steinegger M (2017) Uniclust databases of clustered and deeply annotated protein sequences and alignments. *Nucleic Acids Res* 45(D1):D170–D176
- Nalçacı M et al (2019) Detection of *Leishmania RNA virus 2* in *Leishmania* species from Turkey. *Trans R Soc Trop Med Hyg* 113(7):410–417
- Olivier M, Zamboni DS (2020) *Leishmania (Viannia) guyanensis*, LRV1 virus and extracellular vesicles: a dangerous trio influencing the faith of immune response during muco-cutaneous leishmaniasis. *Curr Opin Immunol* 66:108–113
- Polanská N et al (2020) *Sergentomyia schwetzi*: salivary gland transcriptome, proteome and enzymatic activities in two lineages adapted to different blood sources. *PLoS One* 15(3):e0230537
- Pombi M et al (2020) Molecular detection of *Leishmania (Sauroleishmania) tarentolae* in human blood and *Leishmania (Leishmania) infantum* in *Sergentomyia minuta*: unexpected host-parasite contacts. *Med Vet Entomol* 34(4):470–475
- Pozio E, Gramiccia M, Gradoni L, Maroli M (1983) Hemoflagellates in *Cyrtodactylus kotschy* (Steindachner, 1870) (Reptilia, Gekkonidae) in Italy. *Acta Trop* 40(4):399–400
- Pozio E, Gramiccia M, Gradoni L, Maroli M (1986) Hémoflagellés de *Tarentola mauritanica* L., 1758 (Reptilia, Gekkonidae). In: Rioux JA (ed) *Leishmania* Taxonomie et phylogénèse. IMEEE, Montpellier, pp 149–155
- Procházková M et al (2021) Capsid structure of *Leishmania RNA Virus 1*. *J Virol* 95(3):e01957–e01920
- Quinlan AR (2014) BEDTools: the Swiss-army tool for genome feature analysis. *Curr Protoc Bioinformatics* 47:11.12.1–11.12.34
- Ranque P (1973) Etude morphologique et biologique de quelques Trypanosomatides récoltés au Sénégal. Ph.D. thesis, Université de Aix-Marseille
- Ronquist F et al (2012) MrBayes 3.2: efficient Bayesian phylogenetic inference and model choice across a large model space. *Syst Biol* 61(3):539–542
- Rougeron V, De Meeüs T, Kako Ouraga S, Hide M, Bañuls AL (2010) "Everything you always wanted to know about sex (but were afraid to ask)" in *Leishmania* after two decades of laboratory and field analyses. *PLoS Pathog* 6(8):e1001004
- Saberi R et al (2020) Presence and diversity of *Leishmania RNA virus* in an old zoonotic cutaneous leishmaniasis focus, northeastern Iran: haplotype and phylogenetic based approach. *Int J Infect Dis* 101:6–13
- Sadiq S, Chen YM, Zhang YZ, Holmes EC (2022) Resolving deep evolutionary relationships within the RNA virus phylum *Lenarviricota*. *Virus Evol* 8(1):veac055
- Sádllová J et al (2011) Visualisation of *Leishmania donovani* fluorescent hybrids during early stage development in the sand fly vector. *PLoS One* 6(5):e19851
- Safjanova VM (1966) Serological comparison of leptomonad strains isolated from sandflies with *Leishmania tropica* and leptomonads of reptiles. *Med Parazitol (Mosk)* 6:686–695 (in Russian)
- Safjanova VM (1991) Phlebotominae sandflies as the key link of *Leishmania* parasitic systems. *Parassitologia* 33:505–511
- Safjanova VM, Alekseev AN, Karapet'ian AB (1976) The fate of the promastigotes of *Leishmania tropica major* and *L. gymnodactyli* in the body of *Phlebotomus papatasi* under conditions of a mixed infection. *Parazitologija* 10(1):78–83 (in Russian)
- Saura A et al (2022) Elimination of LRVs elicits different responses in *Leishmania* spp. *mSphere* 7(4):e0033522
- Scheffter SM, Ro YT, Chung IK, Patterson JL (1995) The complete sequence of *Leishmania RNA virus* LRV2-1, a virus of an Old World parasite strain. *Virology* 212(1):84–90
- Stuart KD, Weeks R, Guilbride L, Myler PJ (1992) Molecular organization of *Leishmania RNA virus 1*. *Proc Natl Acad Sci U S A* 89(18):8596–8600
- Tichá L, Kykalová B, Sádllová J, Gramiccia M, Gradoni L, Volf P (2021) Development of various *Leishmania (Sauroleishmania) tarentolae* strains in three *Phlebotomus* species. *Microorganisms* 9(11):2256
- Tichá L, Sádllová J, Bates P, Volf P (2022) Experimental infections of sand flies and geckos with *Leishmania (Sauroleishmania) adleri* and *Leishmania (S.) hoogstraali*. *Parasit Vectors* 15(1):289
- Tichá L et al (2023) Experimental feeding of *Sergentomyia minuta* on reptiles and mammals: comparison with *Phlebotomus papatasi*. *Parasit Vectors* 16(1):126
- Wenyon CM (1920) Observations on the intestinal protozoa of three Egyptian lizards, with a note on a cell-invading fungus. *Parasitology* 12(4):350–365
- WHO (2023) Leishmaniasis. <https://www.who.int/en/news-room/fact-sheets/detail/leishmaniasis>. Accessed 1 Jun 2023
- Widmer G, Dooley S (1995) Phylogenetic analysis of *Leishmania RNA virus* and *Leishmania* suggests ancient virus-parasite association. *Nucleic Acids Res* 23(12):2300–2304
- Wilson V, Southgate B (1979) Lizard *Leishmania*. In: Lumsden W, Evans DA (eds) *Biology of Kinetoplastida*. Academic Press, New York, pp 242–268

- Wolf YI et al (2018) Origins and evolution of the global RNA virome. *mBio* 9(6):e02329–e02318
- Yurchenko V, Chistyakov DS, Akhmadishina LV, Lukashev AN, Sádlová J, Strelkova MV (2023) Revisiting epidemiology of leishmaniasis in Central Asia: lessons learnt. *Parasitology* 150(2):129–136
- Yurchenko V, Lukeš J, Xu X, Maslov DA (2006) An integrated morphological and molecular approach to a new species description in the Trypanosomatidae: the case of *Leptomonas podlipaevi* n. sp., a parasite of *Boisea rubrolineata* (Hemiptera: Rhopalidae). *J Eukaryot Microbiol* 53(2):103–111
- Zakharova A et al (2022) *Leishmania guyanensis* M4147 as a new LRV1-bearing model parasite: phosphatidate phosphatase 2-like protein controls cell cycle progression and intracellular lipid content. *PLoS Negl Trop Dis* 16(6):e0010510
- Zanger H et al (2014) *Leishmania aethiopica* field isolates bearing an endosymbiotic dsRNA virus induce pro-inflammatory cytokine response. *PLoS Negl Trop Dis* 8(4):e2836

**Publisher's note** Springer Nature remains neutral with regard to jurisdictional claims in published maps and institutional affiliations.