

**Lucie Hodíková** (MSc. student)

Comparative reconstruction of metabolic pathways in symbiotic bacteria of blood-sucking insects.

[in Czech, slides in English]

Supervisor: prof. RNDr. Václav Hypša, CSc.

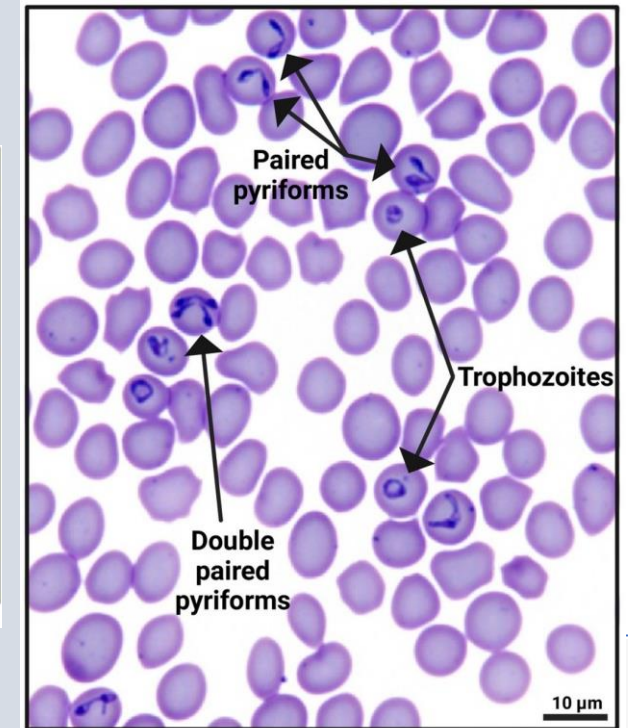
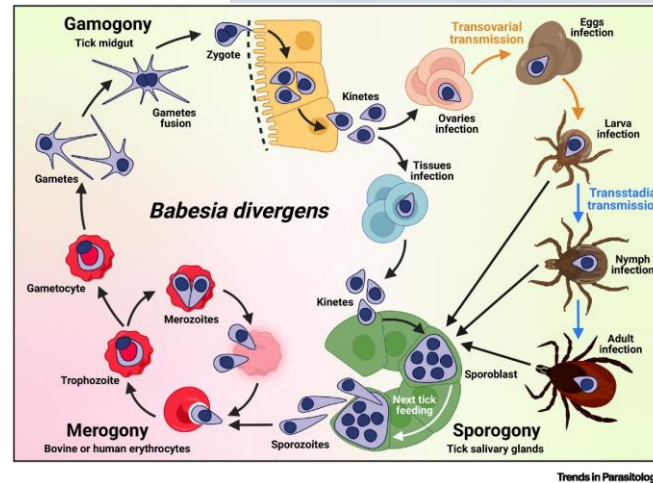


**Ana Maria Filipe** (Ph.D. student)

Unravelling the role of calcium-dependent protein kinases in *Babesia divergens* life cycle.

[in English]

Supervisor: RNDr. Marie Jalovecká, Ph.D.



**Thursday 7.11. 2024, 13:15**

**Faculty of Science, building C,  
lecture room C2**

**Seminar of the Department of Parasitology**